

GTE SYLVANIA

INCORPORATED

FACTORY PREPARED TECHNICAL SERVICE DATA

AIR SUSPENSION SPEAKER

MODEL: AS225A

SERVICE PUBLICATIONS DEPARTMENT

Entertainment Products Group

700 Ellicott Street - Batavia, N.Y.

REMOVAL OF GRILLE ASSEMBLY AND SPEAKERS

IMPORTANT:

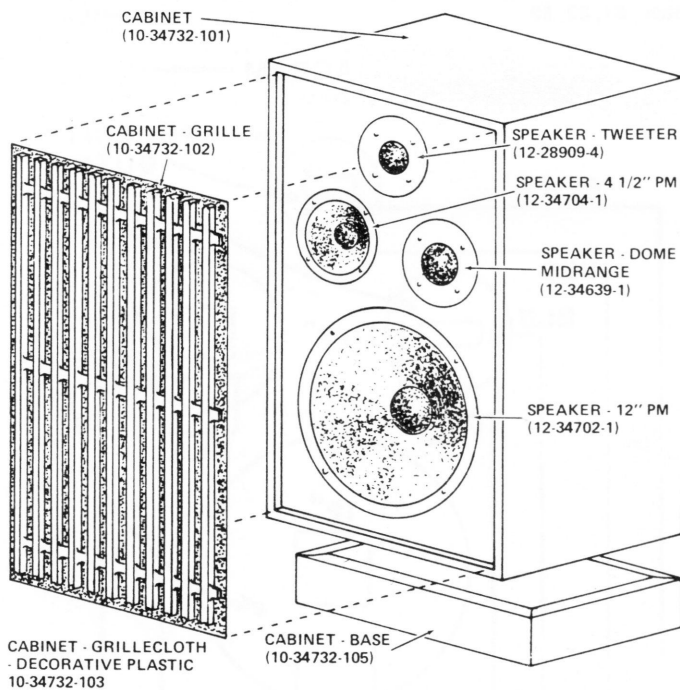
Air Suspension Speaker systems require a complete seal around all openings. Exercise caution in removal and replacement of speakers to insure air-tight seal.

1. The grille assembly is secured to the speaker housing by six (6) nylon fasteners not visible through the grille cloth.
2. Damage to surrounding materials will result from any attempt to remove the grille assembly by prying. Grasp the grille decorative plastic (see illustration) near the

upper left and right corners. A firm outward pull will free the grille assembly from the cabinet.

3. Remove screws from speaker and lift from housing. Disconnect leads from speakers. Be sure to observe correct phasing when installing speakers. Speaker gaskets should be replaced if damaged.
4. To replace grille assembly on speaker housing, position grille correctly on baffle and press down firmly to insure suitable contact with nylon fasteners.

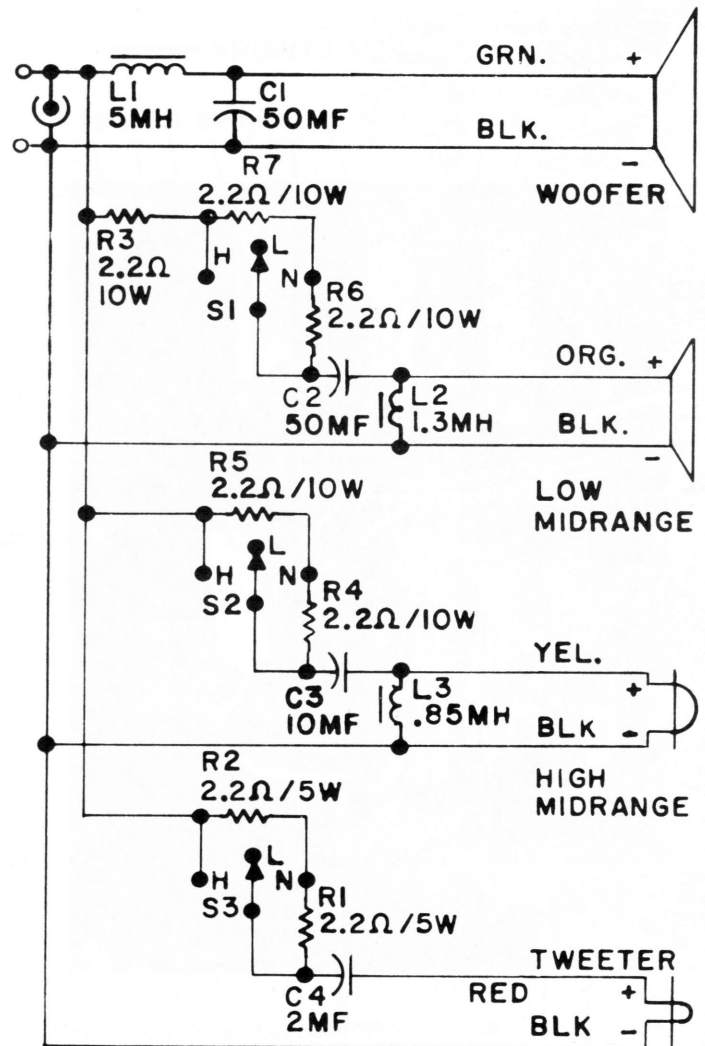
AS225A



PERFORMANCE

Nominal System Impedance	8 ohms
Recommended Amplifier Power	Amplifier rated up to 150W continuous per channel
Frequency Response	20Hz - 20kHz
System Resonance	36Hz
Crossover Frequencies - Tweeter	9kHz
Crossover Frequencies - Upper Midrange	2kHz
Crossover Frequencies - Lower Midrange	350Hz

SCHEMATIC DIAGRAM



IMPORTANT: Always use genuine Sylvania replacement parts and tubes.

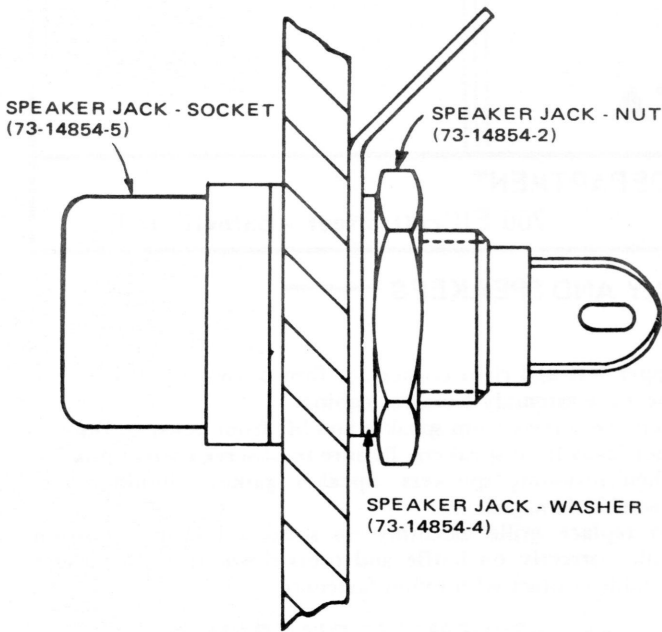
(Over)

MODEL: AS225A

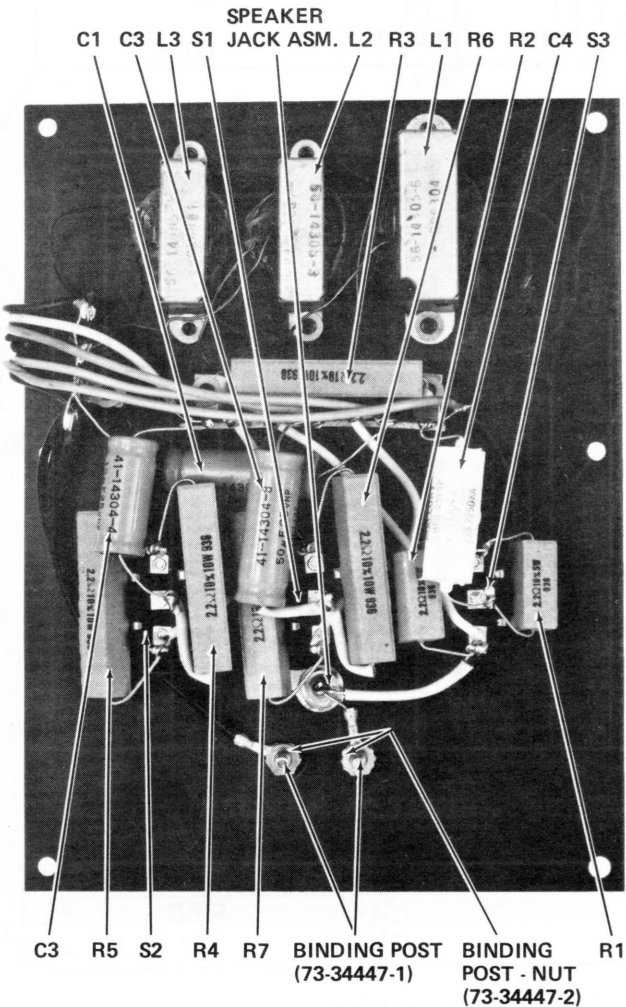
MODEL: AS225A

MODEL: AS225A

PHONO JACK ASSEMBLY



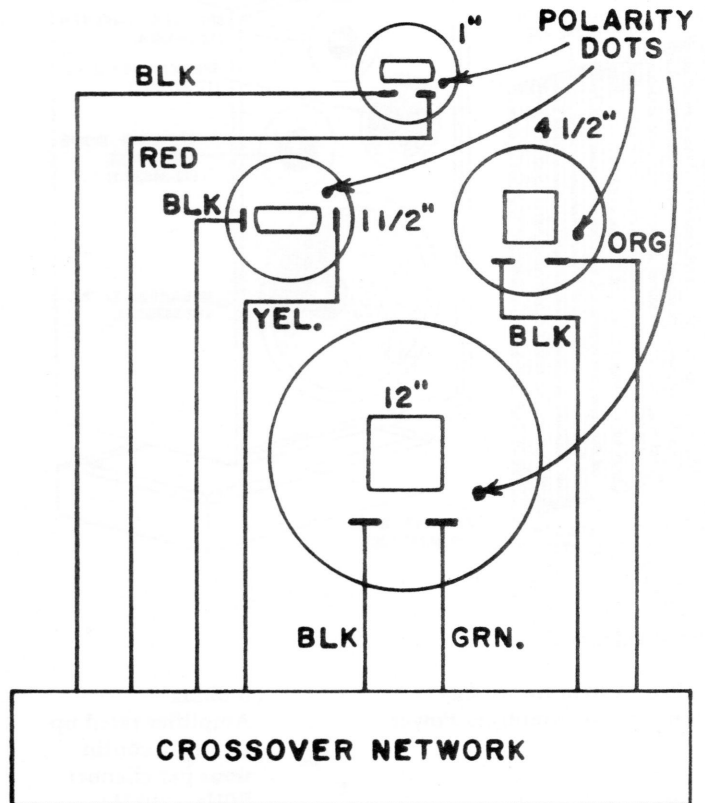
CROSSOVER NETWORK



REPLACEMENT PARTS LIST

DESCRIPTION	SERVICE PART NO.
Binding Post	73-34447-1
Binding Post - Nut	73-34447-2
Board - Crossover Mtg.	86-34836-1
Cabinet	10-34732-101
Cabinet - Base	10-34732-105
Cabinet - Grille Cloth & Panel Asm.	10-34732-102
Cabinet - Grille Cloth - Decorative Plastic	10-34732-103
Capacitor - 50MF/25V - C1, C2	41-14304-8
Capacitor - 10MF/25V - C3	41-14304-4
Capacitor - 2MF/25V - C4	41-14304-2
Coil - 5MH - L1	56-14305-6
Coil - 1.3MH - L2	56-14305-3
Coil - .85MH - L3	56-14305-2
Cord - Speaker	73-34828-1
Resistor - 2.2 ohm, 5W - R1, R2	36-62454-9
Resistor - 2.2 ohm, 10W - R3, R4, R5, R6, R7	36-62455-9
Speaker - Tweeter	12-28909-4
Speaker - Tweeter - Gasket	85-34831-2
Speaker - Dome Midrange	12-34639-1
Speaker - Dome Midrange - Gasket	85-34831-3
Speaker - 4 1/2" PM - Midrange	12-34704-1
Speaker - 4 1/2" PM - Midrange - Gasket	85-34822-1
Speaker - 12" PM	12-34702-1
Speaker - 12" PM - Gasket	85-32586-8
Speaker Jack	73-14854-5
Speaker Jack - Cap	86-34446-1
Speaker Jack - Nut	73-14854-2
Speaker Jack - Washer	73-14854-4
Switch - S1, S2, S3	33-28152-1

WIRING DIAGRAM



NOTE: SHOWN AS VIEWED FROM REAR OF SPEAKERS.